










Tel. 01543 277680  
email pile@miniape.com  
www.miniape.com

# Advanced Pile Elements from APE

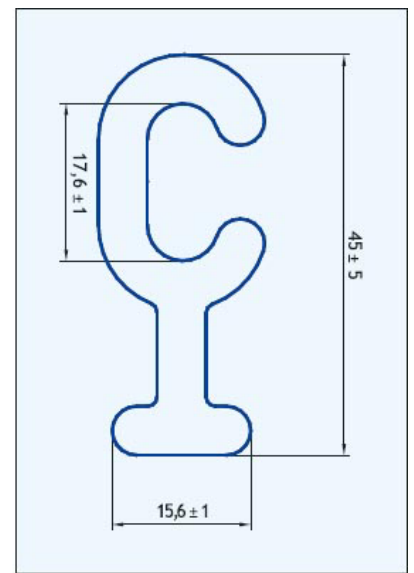
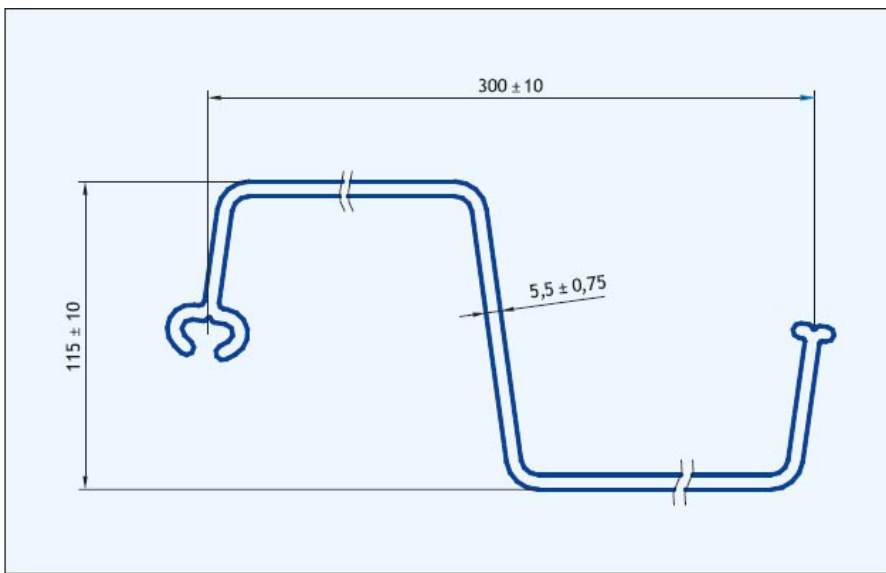
## Europile - The UK's Newest economy plastic pile



-  Attractive double pan profile offering improved rigidity but shallow corrugations
-  Strong interlock - adaptor available to connect with Multilock profile
-  300 mm wide profiles
-  Made from Recycled PVC
-  Co-extruded for a uniform appearance
-  Piling Caps and corner piles available
-  Extremely good value product

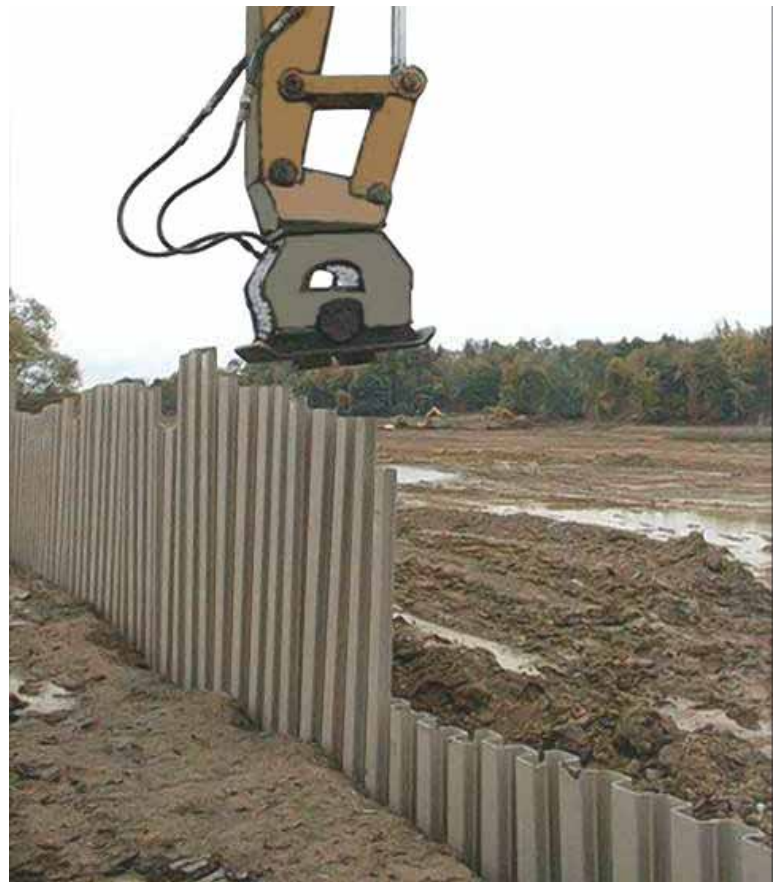
Available in 1,2,3 & 6 metre lengths





Specifications	Units	Europile
Material		PVC
Material Thickness	mm	5.5
Section Modulus	cm <sup>3</sup> /m	320
Weight	kg/m	4.3
Weight of Wall	kg/m <sup>2</sup>	14.2
Width Pile	mm	300
Depth Pile	mm	115
Cross Sectional Area	mm <sup>2</sup>	2992
Density	kg/m <sup>3</sup>	1450-1550
Tensile Strength	Mpa	40
Resilience Modulus by Stretching	Mpa	2000
Resilience Modulus by bending	Mpa	2600
Long Term Resilience Modulus by bending	Mpa	865
Plasticity Limit	Mpa	55
Section Modulus	cm <sup>3</sup> /m	320
Moment of Inertia	cm <sup>4</sup> /m	1800
Allowable Bending Moment	kNm/m	4.25

Notes Calculations based on a Tensile Yield Strength of the material = 40 Mpa, Factor of Safety = 3 and Allowable moment = Tensile Yield Strength × section modulus/3



Tel. 01543 277680  
 email pile@miniape.com  
 www.miniape.com

