



APE Plastic Piling

Sheet Piling Products suitable for
ditch blocking and channel erosion control
in Wetland Restoration Projects



APE Plastic sheet piling has a proven track record for erosion control either as a lining or as a dam structure. Products are either made from recycled PVC or Virgin HDPE.

APE's range boasts a collection of traditional and advanced pile designs, suiting all budgets and site requirements. For more information call us on 01543 277680

The Eco Z—The Economy Z Pile

This is perhaps a profile that has most commonly been associated with ditch blocking, it is a light weight Z pile, again targeted more towards economy side of the market, and represents the cheapest plastic sheet pile available in the UK. It does however still utilise the I beam interlock, which is much more watertight than a curly clutch or ball and socket.

This type of interlock is also far more resistant to pull out (when two pile separate). This product can be used in two ways, all aligned the same way (z rib) or alternated (box rib). The Z rib naturally provides greater coverage, whilst the Box rib provides greater strength.

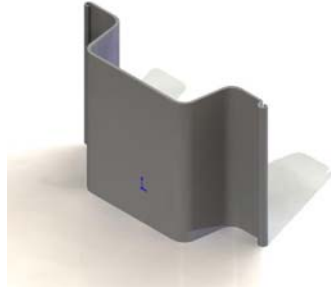


The Masterpile—The Economy U Pile

This is a new addition to the range for those applications and users that prefer working with a U Shape pile.

That stated the interlock design has more commonality to trench sheeting and so will not offer as good a water seal until a degree of silting has occurred.

At 330mm wide this section has more coverage between interlocks and also a proven history within the application. It is also one of the cheapest products available!



The Europile —The Structural Solution

This is a flatter profile, with two corrugations and combined the strength of the Box EcoZ with the coverage of the Z rib Eco Z. This means that you have maximum coverage and strength, combined with this promotional price, the Europile is perhaps the best value product of our range. One of the key design benefits of the Europile is the I beam interlock and the position of the interlock – it points towards the load. Therefore, this product offers by far the best sealing properties of any PVC product we offer.

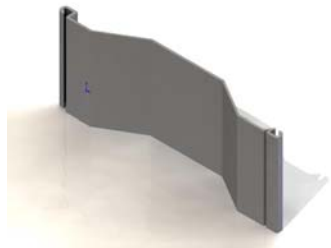
As most ditch blocks using plastic sheet piling are hand driven, the extra thickness of the Europile, makes it much more resistant to damage – a pile you can hit harder to drive faster.



Environ PE—The Alternative Solutions

This product is the only HDPE plastic pile available in the UK, and it has been designed for water tightness as exemplified through its massive 762mm width—less interlock, and best designed interlock—the industry standard Larssen interlock.

This product originally devised for chemical containment, will appeal to those sites that want a good seal, yet do not wish to work with a PVC based product.



The MultiLock—The Advanced Solution

This is one of the most advanced pile designs we offer; at 500mm wide it has less interlocks per wall and so inherently less leakage. This is now the product of choice for the Friends of Langland Moss working on behalf of the Scottish Natural Heritage, and has recently been adopted by Staffordshire Wildlife Trust – Farming in Flood plains Scheme.

The unique hexagonal design, which makes this one of the most rigid sections available – the more rigid the more efficient, the drive – no wobble once hit. The main advantage of this product is the Hexagons can be used for internal reinforced with timber posts, that increase the strength of the product – so no external struts and frames.

Most recently, this ability has been exploited to create a sluice mechanism: The two short sheets being supported by the internal timbers, and sealing maintained by pressure exerted onto a rubber strip, as the pile cap is screw down onto the timber element.

